

NCERT Solutions for Class 11 Biology Chapter 8

Cell : The Unit of Life Class 11

Chapter 8 Cell : The Unit of Life Exercise Solutions

Exercise : Solutions of Questions on Page Number : 141

Q1 :

Which of the following is not correct?

- (a) Robert Brown discovered the cell.
- (b) Schleiden and Schwann formulated the cell theory.
- (c) Virchow explained that cells are formed from pre-existing cells.
- (d) A unicellular organism carries out its life activities within a single cell.

Answer :

- (a) Robert Brown did not discover the cell. The cell was discovered by Robert Hook.

Q2 :

New cells generate from

- (a) bacterial fermentation (b) regeneration of old cells
- (c) pre-existing cells (d) abiotic materials

Answer :

Answer: (c)

According to the biogenic theory, new cells can only arise from pre-existing cells. Only complete cells, in favourable conditions, can give rise to new cells.

Q3 :

Match the following

- (a) Cristae (i) Flat membranous sacs in stroma
- (b) Cisternae (ii) Infoldings in mitochondria
- (c) Thylakoids (iii) Disc-shaped sacs in Golgi apparatus

Answer :

Column I	Column II
-----------------	------------------

(a)	Cristae	(ii)	Infoldings in mitochondria
(b)	Cisternae	(iii)	Disc-shaped sacs in Golgi apparatus
(c)	Thylakoids	(i)	Flat membranous sacs in stroma

Q4 :

Match the following

- (a) Cristae (i) Flat membranous sacs in stroma
 (b) Cisternae (ii) Infoldings in mitochondria
 (c) Thylakoids (iii) Disc-shaped sacs in Golgi apparatus

Answer :

Column I		Column II	
(a)	Cristae	(ii)	Infoldings in mitochondria
(b)	Cisternae	(iii)	Disc-shaped sacs in Golgi apparatus
(c)	Thylakoids	(i)	Flat membranous sacs in stroma

Q5 :

Which of the following is correct:

- (a) Cells of all living organisms have a nucleus.
 (b) Both animal and plant cells have a well defined cell wall.
 (c) In prokaryotes, there are no membrane bound organelles.
 (d) Cells are formed *de novo* from abiotic materials.

Answer :

Answer: (c)

Membrane-bound organelles are organelles surrounded by a double membrane. Nucleus, mitochondria, chloroplasts, etc., are examples of such organelles. These cell organelles are absent from prokaryotes.

- (a) Only eukaryotic cells have nuclei. They are absent from prokaryotes.
 (b) Cell walls are only present in plant cells. They are absent from all animal cells.
 (d) All cells arise from pre-existing cells.

Q6 :

What is a mesosome in a prokaryotic cell? Mention the functions that it performs.

Answer :

Mesosome is a convoluted membranous structure formed in a prokaryotic cell by the invagination of the plasma membrane. Its functions are as follows:

- (1) These extensions help in the synthesis of the cell wall, replication of DNA. They also help in the equal distribution of chromosomes into the daughter cells.
- (2) It also increases the surface area of the plasma membrane to carry out various enzymatic activities.
- (3) It helps in secretion processes as well as in bacterial respiration.

Q7 :

How do neutral solutes move across the plasma membrane? Can the polar molecules also move across it in the same way? If not, then how are these transported across the membrane?

Answer :

Plasma membrane is the outermost covering of the cell that separates it from the environment. It regulates the movement of substances into the cell and out from it. It allows the entry of only some substances and prevents the movement of other materials. Hence, the membrane is selectively-permeable.

Movement of neutral solutes across the cell membrane - Neutral molecules move across the plasma membrane by simple passive diffusion. Diffusion is the movement of molecules from a region of higher concentration to a region of lower concentration.

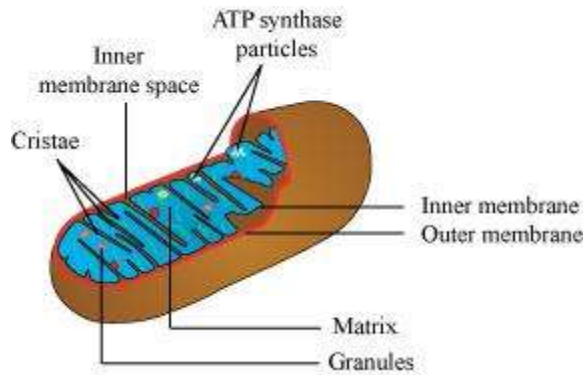
Movement of polar molecules across the cell membrane - The cell membrane is made up of a phospholipid bilayer and proteins. The movement of polar molecules across the non-polar lipid bilayer requires carrier-proteins. Carrier-proteins are integral protein particles having certain affinity for specific solutes. As a result, they facilitate the transport of molecules across the membrane.

Q8 :

Name two cell-organelles that are double membrane bound. What are the characteristics of these two organelles? State their functions and draw labelled diagrams of both.

Answer :

Mitochondria and chloroplasts are the two organelles that are double-membrane-bound.



Characteristics of the mitochondria

Mitochondria are double-membrane-bound structures. The membrane of a mitochondrion is divided into the inner and outer membranes, distinctly divided into two aqueous compartments - outer and inner compartments. The outer membrane is very porous (containing the organelle), while the inner membrane is deeply-folded.

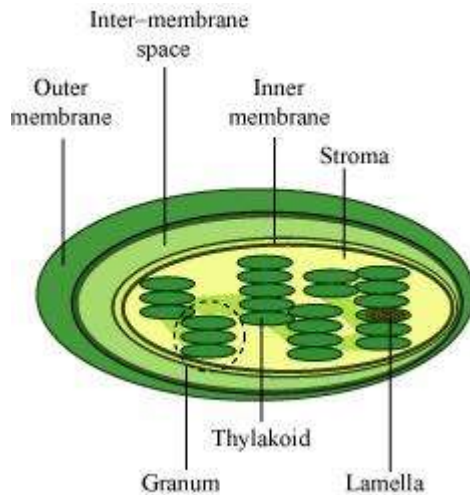
These folds are known as cristae. Cristae increase the surface area inside the cell. They are the sites for ATP-generating chemical reactions. The membrane of a mitochondrion contains specific enzymes meant for specific mitochondrial functions. Hence, the mitochondria are the sites for aerobic respiration. They have their own DNA and ribosomes. Thus, they are able to make their own proteins. This is why they are considered as semi-autonomous organelles

Characteristics of chloroplasts

Chloroplasts are double-membrane-bound structures.

They are divided into outer and inner membranes, further divided into two distinct regions:

- (i) Grana are stacks of flattened discs containing chlorophyll molecules. The flattened membranous sacs are called thylakoids. The thylakoids of adjacent grana are connected by membranous tubules called stroma lamellae.
- (ii) Stroma is a homogenous mixture in which grana are embedded. It contains several enzymes that are used for the synthesis of carbohydrates and proteins. It also contains its own DNA and ribosomes.



Functions of the mitochondria:

- (i) They are the sites for cellular respiration.
- (ii) They provide energy in the form of ATP for all vital activities of living cells.

(iii) They have their own DNA and ribosomes. Hence, they are regarded as semi-autonomous organelles.

(iv) They have several enzymes, intermediately required for the synthesis of various chemicals such as fatty acids, steroids, and amino acids.

Functions of chloroplasts:

(i) They trap solar energy and utilise it for manufacturing food for plants. Hence, they are involved in the process of photosynthesis.

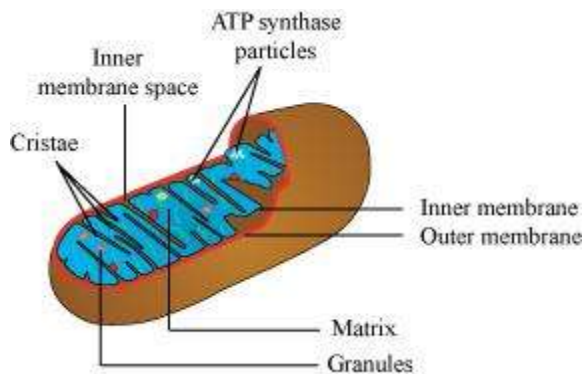
(ii) They contain the enzymes required for the synthesis of carbohydrates and proteins.

Q9 :

Name two cell-organelles that are double membrane bound. What are the characteristics of these two organelles? State their functions and draw labelled diagrams of both.

Answer :

Mitochondria and chloroplasts are the two organelles that are double-membrane-bound.



Characteristics of the mitochondria

Mitochondria are double- membrane-bound structures. The membrane of a mitochondrion is divided into the inner and outer membranes, distinctly divided into two aqueous compartments - outer and inner compartments. The outer membrane is very porous (containing the organelle), while the inner membrane is deeply-folded.

These folds are known as cristae. Cristae increase the surface area inside the cell. They are the sites for ATP-generating chemical reactions. The membrane of a mitochondrion contains specific enzymes meant for specific mitochondrial functions. Hence, the mitochondria are the sites for aerobic respiration. They have their own DNA and ribosomes. Thus, they are able to make their own proteins. This is why they are considered as semi-autonomous organelles

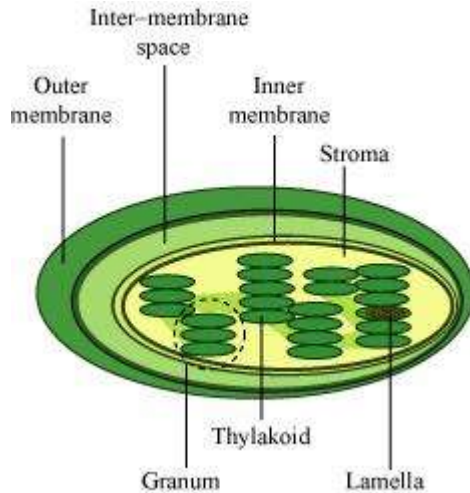
Characteristics of chloroplasts

Chloroplasts are double-membrane-bound structures.

They are divided into outer and inner membranes, further divided into two distinct regions:

(i) Grana are stacks of flattened discs containing chlorophyll molecules. The flattened membranous sacs are called thylakoids. The thylakoids of adjacent grana are connected by membranous tubules called stroma lamellae.

(ii) Stroma is a homogenous mixture in which grana are embedded. It contains several enzymes that are used for the synthesis of carbohydrates and proteins. It also contains its own DNA and ribosomes.



Functions of the mitochondria:

- (i) They are the sites for cellular respiration.
- (ii) They provide energy in the form of ATP for all vital activities of living cells.
- (iii) They have their own DNA and ribosomes. Hence, they are regarded as semi-autonomous organelles.
- (iv) They have several enzymes, intermediately required for the synthesis of various chemicals such as fatty acids, steroids, and amino acids.

Functions of chloroplasts:

- (i) They trap solar energy and utilise it for manufacturing food for plants. Hence, they are involved in the process of photosynthesis.
- (ii) They contain the enzymes required for the synthesis of carbohydrates and proteins.

Q10 :

What are the characteristics of prokaryotic cells?

Answer :

Prokaryotic cell is a unicellular organism lacking membrane-bound organelles.

The characteristics of prokaryotic cells are as follows:

- (i) Most of them are unicellular.
- (ii) They are generally small in size. The size of a prokaryotic cell varies from 0.5 - 5 μm .
- (iii) The nuclear region of a prokaryotic cell is poorly-defined because of the absence of a nuclear membrane. Hence, a prokaryotic cell lacks a true nucleus.
- (iv) The genetic materials of prokaryotic cells are naked. They contain single, circular chromosomes. In addition to the genomic DNA, they have a small, circular plasmid DNA.

(v) They have specialised membranous structures called mesosomes. Mesosomes are formed by the invagination of the cell membrane. These extensions help in the synthesis of the cell wall, replication of DNA. They also help in the equal distribution of chromosomes into the daughter cells.

(vi) Membrane-bound cell organelles such as mitochondria, plastids, and endoplasmic reticulum are absent from a prokaryotic cell.

(vii) Most prokaryotic cells contain a three-layered structure - outermost glycocalyx, middle cell wall, and the innermost plasma membrane. This structure acts as a protective unit.

Examples of prokaryotic cells include blue green algae, bacteria, etc.

Q11 :

Multicellular organisms have division of labour. Explain.

Answer :

Multicellular organisms are made up of millions and trillions of cells. All these cells perform specific functions. All the cells specialised for performing similar functions are grouped together as tissues in the body. Hence, a particular function is carried out by a group of cells at a definite place in the body. Similarly, different functions are carried out by different groups of cells in an organism. This is known as division of labour in multicellular organisms.

Q12 :

Multicellular organisms have division of labour. Explain.

Answer :

Multicellular organisms are made up of millions and trillions of cells. All these cells perform specific functions. All the cells specialised for performing similar functions are grouped together as tissues in the body. Hence, a particular function is carried out by a group of cells at a definite place in the body. Similarly, different functions are carried out by different groups of cells in an organism. This is known as division of labour in multicellular organisms.

Q13 :

Cell is the basic unit of life. Discuss in brief.

Answer :

Cells are the basic units of life capable of doing all the required biochemical processes that a normal cell has to do in order to live. The basic needs for the survival of all living organisms are the same. All living organisms need to respire, digest food for obtaining energy, and get rid of metabolic wastes.

Cells are capable of performing all the metabolic functions of the body. Hence, cells are called the functional units of life.

Q14 :

What are nuclear pores? State their function.

Answer :

Nuclear pores are tiny holes present in the nuclear membrane of the nucleus. They are formed by the fusion of two nuclear membranes.

These holes allow specific substances to be transferred into a cell and out from it. They allow molecules such as RNA and proteins to move in both directions, between the nucleus and the cytoplasm.

Q15 :

Both lysosomes and vacuoles are endomembrane structures, yet they differ in terms of their functions.

Comment.

Answer :

Lysosomes are membrane-bound vesicular structures holding a variety of enzymes such as lipases, proteases, and carbohydrases. The purpose of lysosomes is to digest worn out cells. They are involved in the intracellular digestion of foreign food particles and microbes. Sometimes, they also act as suicidal bags. They are involved in the self digestion of cells. They are a kind of waste disposal systems of a cell. On the other hand, vacuoles are storage sacs found in cells. They might store the waste products of cells. In unicellular organisms, the food vacuole contains the consumed food particles. It also plays a role in expelling excess water and some wastes from the cell.

Q16 :

Describe the structure of the following with the help of labelled diagrams.

(i) Nucleus (ii) Centrosome

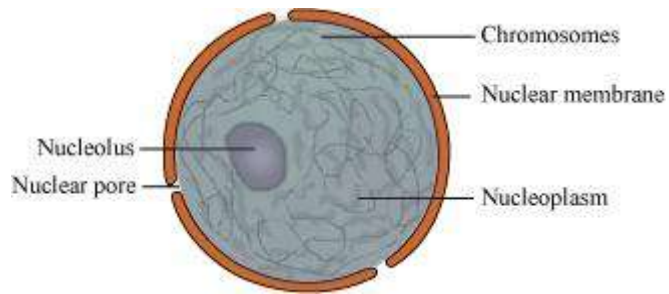
Answer :

(i) Nucleus

Nucleus controls all the cellular activities of the cell. It is spherical in shape. It is composed of the following structures:

Nuclear membrane: It is a double membrane separating the contents of the nucleus from the cytoplasm. The narrow space between the two membranes is called the perinuclear space. Nuclear membrane has tiny holes called nuclear pores. These holes allow specific substances to be transferred into a cell and out from it.

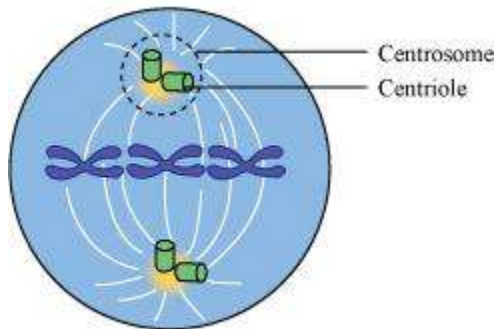
Nucleoplasm/Nuclear matrix: It is a homogenous granular fluid present inside the nucleus. It contains the nucleolus and chromatin. Nucleolus is a spherical structure that is not bound by any membrane. It is rich in protein and RNA molecules, and is the site for ribosome formation. Chromatin is an entangled mass of thread-like structures. It contains DNA and some basic proteins called histones.



(ii) Centrosome

Centrosome consists of two cylindrical structures called centrioles. Centrioles lie perpendicular to each other. Each has a cartwheel-like organisation.

A centriole is made up of microtubule triplets that are evenly spaced in a ring. The adjacent triplets are linked together. There is a proteinaceous hub in the central part of a centriole. The hub is connected to the triplets via radial spokes. These centrioles help in organising the spindle fibres and astral rays during cell division. They form the basal body of cilia and flagella.



Q17 :

What is a centromere? How does the position of centromere form the basis of classification of chromosomes. Support your answer with a diagram showing the position of centromere on different types of chromosomes.

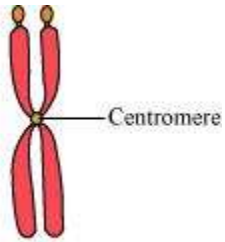
Answer :

Centromere is a constriction present on the chromosomes where the chromatids are held together.

Chromosomes are divided into four types based on the position of the centromere.

(i) Metacentric chromosome

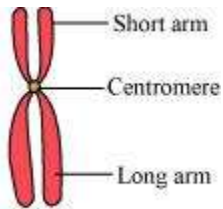
The chromosomes in which the centromere is present in the middle and divides the chromosome into two equal arms is known as a metacentric chromosome.



Metacentric chromosome

(ii) Sub-metacentric chromosome

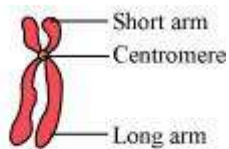
The chromosome in which the centromere is slightly away from the middle region is known as a sub-metacentric chromosome. In this, one arm is slightly longer than the other.



Sub-metacentric chromosome

(iii) Acrocentric chromosome

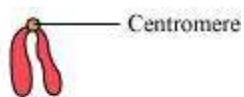
The chromosome in which the centromere is located close to one of the terminal ends is known as an acrocentric chromosome. In this, one arm is extremely long and the other is extremely short.



Acrocentric chromosome

(iv) Telocentric chromosome

The chromosome in which the centromere is located at one of the terminal ends is known as a telocentric chromosome.



Telocentric chromosome